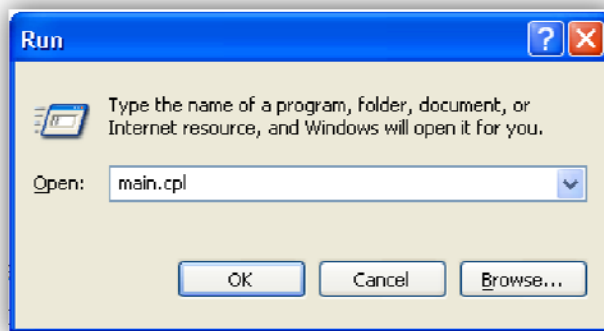


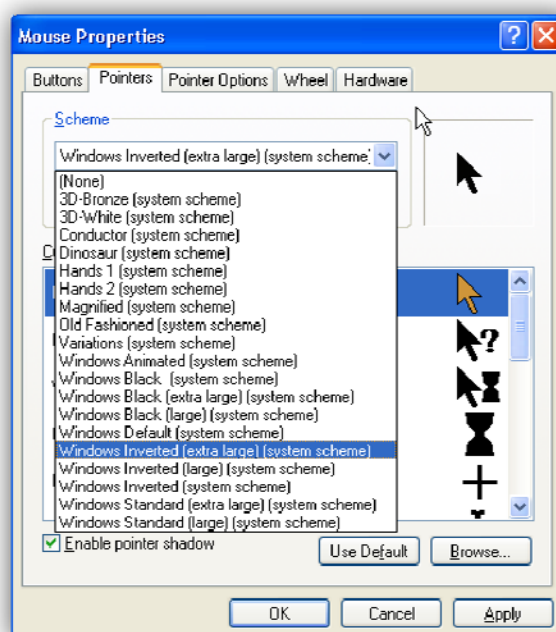
Change the Size of Your Mouse Pointer & I-Beam in Windows XP

Do you have difficulty seeing your mouse pointer, and also your I-beam when you move your mouse over text? It is easy to change the size of both these items. To make the change, follow these steps:

1. Hold down the **Windows** key (between **Ctrl** and **Alt** on the left of the **space bar**).
2. Type **R** which will open the **Run** dialog box
3. Type *main.cpl* in the **Open:** text area



4. Click **OK**.
5. This places you in the **Mouse Properties** dialog box.
6. Click on the **Pointers** tab.
7. Select one of the **Windows Large** or **Windows Extra Large** pointer from the Scheme drop down box.



8. Click **OK** and your pointer and I-beam will be larger.



You may find this change particularly useful if you are vision impaired. The I-beam can be difficult to see when you move your mouse over text, but the larger I-beam is very easy to see.

There are quite a few schemes available for you to select, and once you have selected one the middle of the dialog box will show you how your mouse will behave.

If you click on the **Options** button on the **Pointers** tab you will be able to select a different symbol for the normal arrow pointer. This is not necessarily recommended because it can have unforeseen results such as you being unable to point at anything on your screen. Below is the “*dinosaur2*” option which totally changed the mouse pointer. The only way to change this back to a pointer was to know how to work around a dialog box using the keyboard.

